

JP

Service instructions



CONTENTS

	Page
1. General information	3
1.1 Hazard statements	3
1.2 Notes	3
2. Safety information for working on the product	4
3. Maintenance	4
4. Mounting the handle	5
5. Dismantling the product	5
5.1 Before dismantling the product	5
5.2 Dismantling the pump housing	5
5.3 Replacing the plugs	6
5.4 Dismantling the hydraulic parts	6
5.5 Dismantling the motor shell	7
5.6 Disconnecting the power cable from the terminal box	7
5.7 Removing the motor fan	7
5.8 Removing the impeller	8
5.9 Removing the shaft seal	8
6. Assembling the product	9
6.1 Before assembling the product	9
6.2 Fitting the shaft seal	9
6.3 Fitting the impeller	10
6.4 Fitting the motor fan	10
6.5 Fitting the motor shell	11
6.6 Connecting the power cable in the terminal box	11
6.7 Fitting the hydraulic parts	12
6.8 Fitting the pump housing	12
7. Additional information	13
7.1 Lubricant	13
7.2 Torques	13
7.3 Nameplate	13
7.4 Type key	13
7.5 Fault finding the product	13
7.6 Exploded view	14



Read this document before starting service work on the product. Installation and service work must comply with local regulations and accepted codes of good practice.

Observe the safety instructions in the installation and operating instructions for the product.

1. General information

1.1 Hazard statements

The symbols and hazard statements below may appear in Grundfos installation and operating instructions, safety instructions and service instructions.



DANGER

Indicates a hazardous situation which, if not avoided, will result in death or serious personal injury.



WARNING

Indicates a hazardous situation which, if not avoided, could result in death or serious personal injury.



CAUTION

Indicates a hazardous situation which, if not avoided, could result in minor or moderate personal injury.

The hazard statements are structured in the following way:



SIGNAL WORD

Description of hazard

Consequence of ignoring the warning.
- Action to avoid the hazard.

1.2 Notes

The symbols and notes below may appear in Grundfos installation and operating instructions, safety instructions and service instructions.



Observe these instructions for explosion-proof products.



A blue or grey circle with a white graphical symbol indicates that an action must be taken.



A red or grey circle with a diagonal bar, possibly with a black graphical symbol, indicates that an action must not be taken or must be stopped.



If these instructions are not observed, it may result in malfunction or damage to the equipment.



Tips and advice that make the work easier.

2. Safety information for working on the product

WARNING

Electric shock



Death or serious personal injury

- Switch off the power supply before you start any work on the product. Make sure that the power supply cannot be switched on accidentally.

WARNING

Electric shock



Death or serious personal injury

- The product is supplied with a grounding conductor and grounding-type attachment plug. To reduce the risk of electric shock, be certain that the product is connected only to a properly grounded, grounding-type receptacle (protective earth).

WARNING

Electric shock



Death or serious personal injury

- Power cables without a plug must be connected to a supply disconnecting device incorporated in the fixed wiring according to the local wiring rules.

WARNING

Electric shock



Death or serious personal injury

- If the product is used for cleaning or maintenance of swimming pools, garden ponds or similar places, make sure that the product is supplied through a residual-current device (RCD) with a rated residual operating current not exceeding 30 mA.

WARNING

Chemical hazard



Death or serious personal injury

- Make sure that the product has only been used for water. If the product has been used for pumping aggressive liquids, flush the system with clean water before you start work on the product.

WARNING

Pressurised system



Death or serious personal injury

- Before dismantling the pump, drain the system or close the isolating valves on both sides of the pump. Slowly loosen the drain plug and unpressurise the system

CAUTION

Impurities in the water



Minor or moderate personal injury

- Before the pump is used for supplying drinking water, flush the pump thoroughly with clean water.

CAUTION

Crushing of feet



Minor or moderate personal injury

- Wear safety shoes when handling the product.

CAUTION

Hot surface



Minor or moderate personal injury

- Use protective gloves if the liquid or ambient temperature is higher than 40 °C.

CAUTION

Hot or cold liquid



Minor or moderate personal injury

- Make sure that escaping hot or cold liquid does not cause injury to persons or damage to the equipment.



Only qualified persons are allowed to service the pump.



Do not turn on the power supply until the pump has been filled with liquid.

3. Maintenance

The product is maintenance-free during normal operation. For cleaning, use a dry and dust-free cloth.

4. Mounting the handle



Position numbers of parts (numbers in brackets) refer to section 7.6 *Exploded view*.

1. Fit the handle (190) on the motor flange.

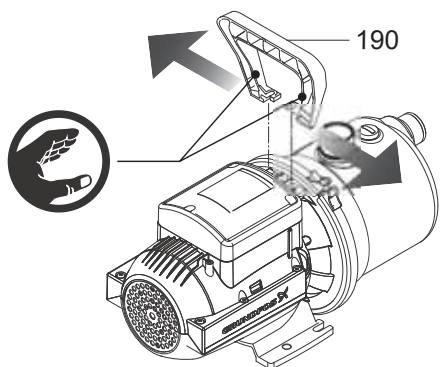


Fig. 1 Mounting the handle

2. Place each screw (190b) with the washer on top and the hexagon nut at the bottom.

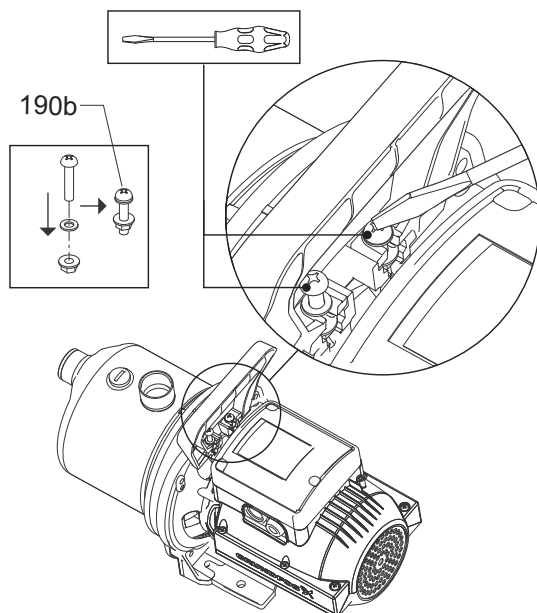


Fig. 2 Fastening the screws on the handle

5. Dismantling the product



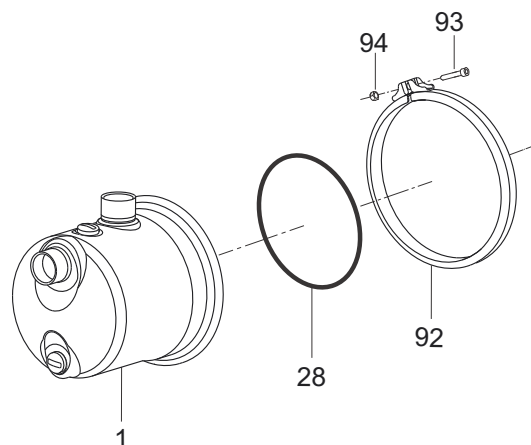
Position numbers of parts (numbers in brackets) refer to section 7.6 *Exploded view*.

5.1 Before dismantling the product

- Disconnect the power supply to the motor.
- Remove the power cable in accordance with local regulations.
- Gradually loosen the valves to release the pressure in the pump.
- Remove the drain plug (31) to drain the pump.

5.2 Dismantling the pump housing

TM07 3807 0519

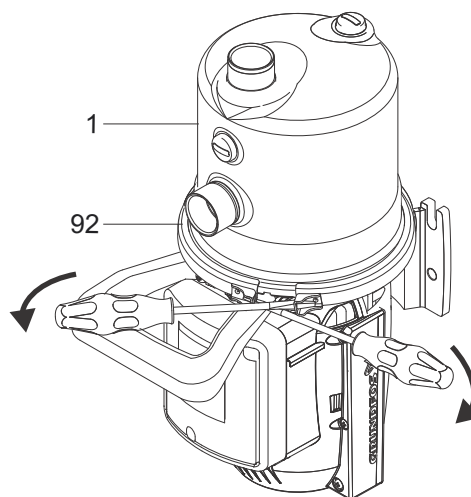


TM07 3808 0519

Fig. 3 Dismantling the pump housing

1. Place the pump vertically with the inlet facing upwards.
2. Unscrew the clamp ring (92) by loosening screw (93) and nut (94).
3. Remove the clamp ring (92) from the recess. Use two flat screw drivers to lift the clamp ring from the recess.

TM07 3834 0519



TM07 3809 0519

Fig. 4 Removing the clamp ring

4. Remove the pump housing (1) including the hydraulic parts (20 and 21).
5. Remove the O-ring (28).

5.3 Replacing the plugs

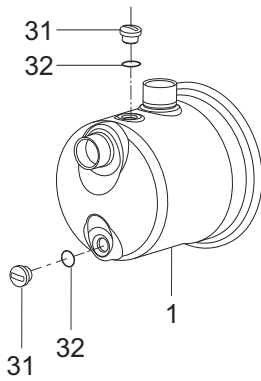


Fig. 5 Replacing the plugs

1. Remove the two plugs (31) by turning each plug counterclockwise with a big flat screwdriver.
2. Lubricate the O-ring seats on the pump housing (1). See section 7.1 *Lubricant*.
3. Place the new plugs (31) and O-rings (32). Fasten the plugs (31) by turning the plug clockwise with a big flat screwdriver.

TM07 3810 0519

5.4 Dismantling the hydraulic parts

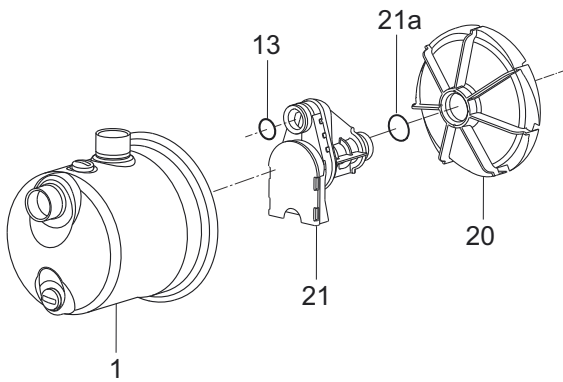


Fig. 6 Hydraulic parts and pump housing

1. Place the pump housing (1) vertically with the inlet facing upwards.
2. Use a suitable tool which fits inside the inlet and gently press down on the venturi tube (21) to loosen the hydraulic parts (20, 21, 21a and 13).

TM07 3811 0519

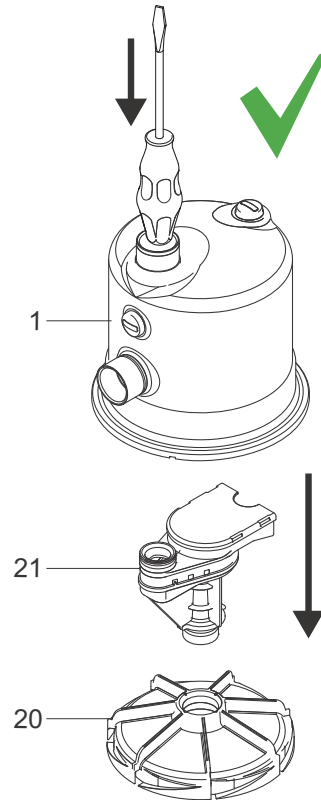


Fig. 7 Removal of hydraulic parts



Do not try to remove the diffuser (20) by using screwdrivers or similar tools, as it might break.

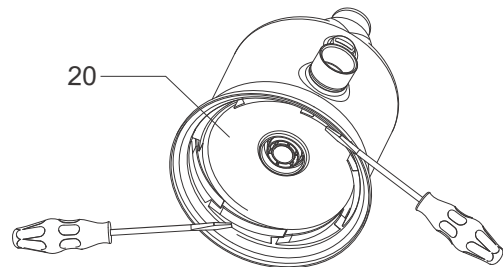


Fig. 8 How not to remove the diffuser

TM07 3812 0519

TM07 3813 0519

5.5 Dismantling the motor shell

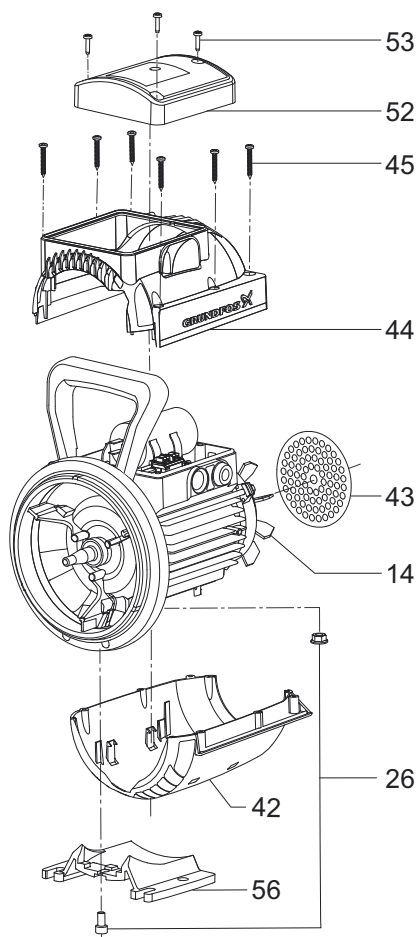


Fig. 9 Dismantling the motor shell

1. Remove the terminal box cover (52) by loosening the three screws (53).
2. Disconnect the power cable as required. Follow the instructions in section 5.6 *Disconnecting the power cable from the terminal box*.
3. Remove the upper motor shell (44) by loosening the six screws (45).
4. Remove the shell grid (43).
5. Remove the foot (56) by loosening the screw and nut (26).
6. Remove the lower motor shell (42).

5.6 Disconnecting the power cable from the terminal box



If you are replacing the motor shell (42, 44), disconnect the power cable in the terminal box.
If you are replacing the impeller (19) or shaft seal (16, 16a), you do not need to disconnect the power cable in the terminal box.

1. Locate the power-supply terminal and cable clamp inside the terminal box.

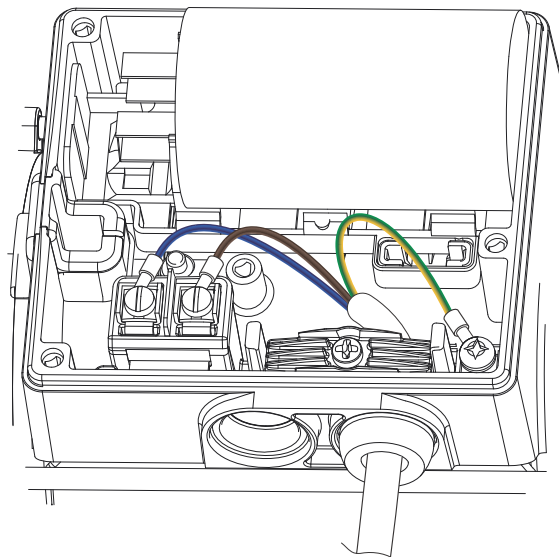


Fig. 10 Disconnecting the power cable

2. Loosen the three cable conductors from the terminal box.
3. Loosen the screw that holds the cable clamp.
4. Pull the cable through the cable gland located on the side of the terminal box.

5.7 Removing the motor fan

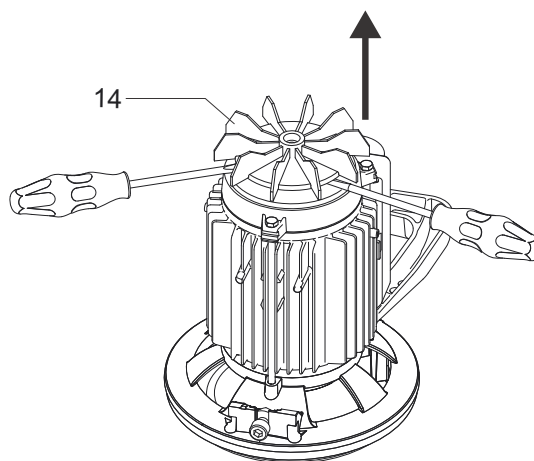


Fig. 11 Removing the motor fan

1. Remove the motor fan (14) from the shaft with two large flat screw drivers. Make sure to use sufficiently large screw drivers. Place the screw drivers between motor flange and fan at any two points.

TM07 3814 0519

TM07 3836 0519

TM07 3816 0519

5.8 Removing the impeller

1. Place the motor vertically with the impeller (19) facing upwards.
2. Clamp the motor shaft end in a vice with soft copper or aluminium jaw faces to protect the shaft end.

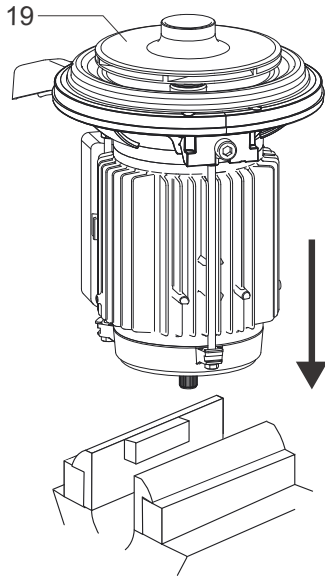


Fig. 12 Placing the motor shaft in a vice

3. Turn the impeller (19) counterclockwise by hand and remove it.

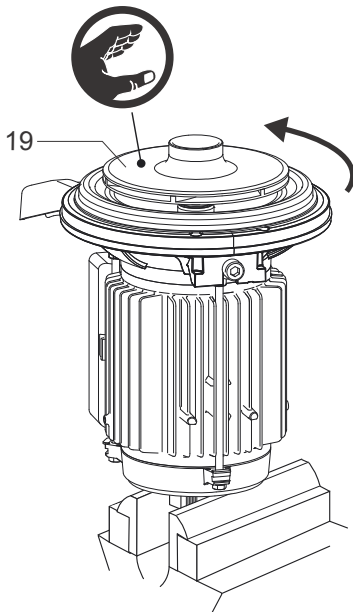


Fig. 13 Removing the impeller

5.9 Removing the shaft seal



Do not touch the seal faces.

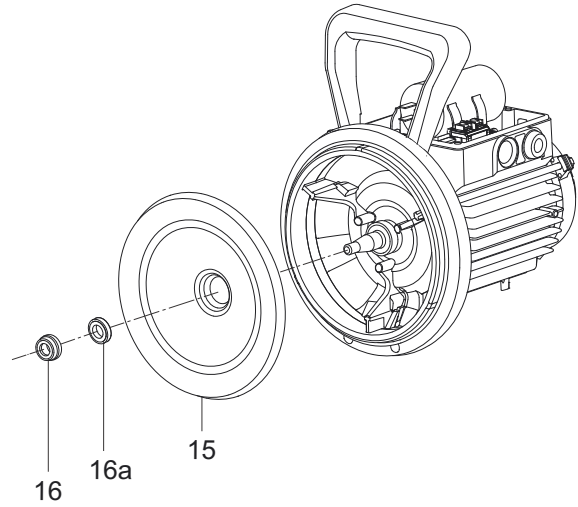


Fig. 14 Shaft seal and seal disc

TM07 3817 0519

TM07 3819 0519



Fig. 15 How to correctly hold the shaft seal

TM07 3818 0519

TM07 3820 0519

1. Remove the rotating part of the shaft seal (16) by inserting two flat screw drivers in the shaft seal spring. Lever the screw drivers against any two points at the edge of the seal disc.

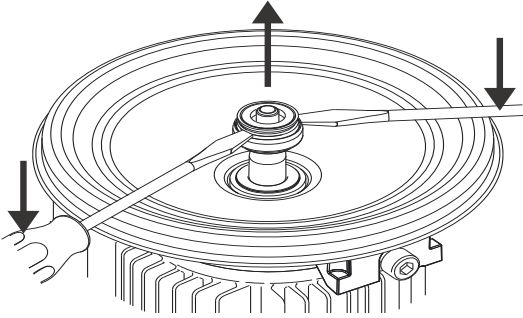


Fig. 16 Removing the rotating part of the shaft seal

2. Remove the seal disc (15) including the stationary part of the shaft seal (16a).
3. Remove the stationary shaft seal ring (16a) from the seal disc (15) by pushing gently with a finger from below. Hold the seal ring on the lower side and on the rubbery outer diameter. Do not touch the seal face.

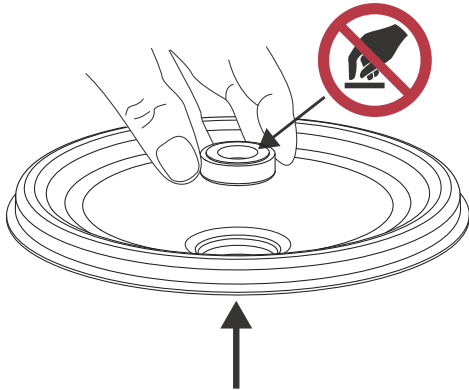


Fig. 17 Removing the stationary part of the shaft seal

6. Assembling the product



Position numbers of parts (numbers in brackets) refer to section 7.6 *Exploded view*.

6.1 Before assembling the product

- Clean and check all parts.
- Replace defective parts.

6.2 Fitting the shaft seal



Do not touch the seal faces.

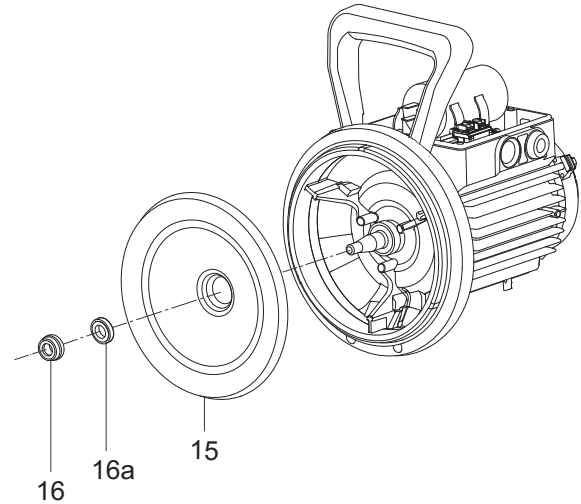


Fig. 18 Shaft seal and seal disc



Fig. 19 How to correctly hold the shaft seal

TM07 3821 0519

TM07 3822 0519

TM07 3819 0519

TM07 3820 0519

1. Clamp the motor shaft end in a vice with soft copper or aluminium jaw faces to protect the shaft end. See fig. 12.
2. Lubricate the seal disc opening. See section 7.1 *Lubricant*.

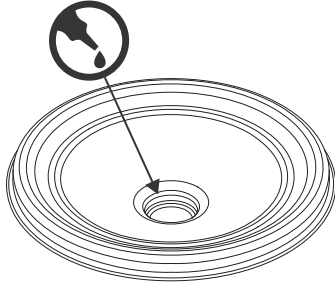


Fig. 20 Lubricating the seal disc

3. Fit the stationary part of the shaft seal (16a) inside the seal disc (15).



Fig. 21 Fitting the stationary part of the shaft seal

4. Lubricate the shaft. See section 7.1 *Lubricant*.
5. Place the seal disc (15) with the stationary part of the shaft seal (16a) on the shaft and make sure the seal disc (15) centres on the motor flange.

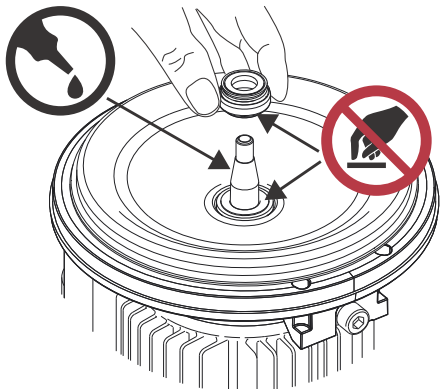


Fig. 22 Lubricating the shaft and placing the rotating part of the shaft seal.

6. Place the rotating part of the shaft seal (16) on the shaft and press it down with two fingers.

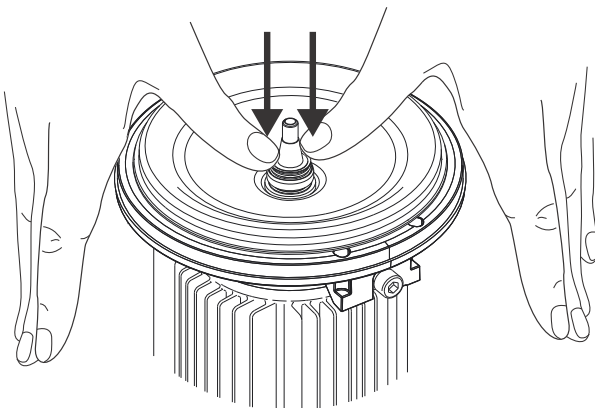


Fig. 23 Fitting the rotating part of the shaft seal

6.3 Fitting the impeller

1. Fit the impeller (19) on the shaft.
2. Spin the impeller (19) clockwise and tighten by hand until you feel the resistance of the mechanical stop.

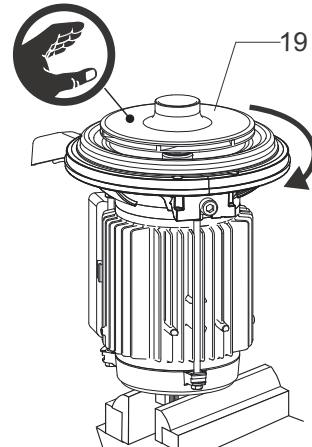


Fig. 24 Fitting the impeller

6.4 Fitting the motor fan

1. Place the pump in a vertical position with the shaft end facing upwards. The surface must be smooth or soft to protect the impeller (15) facing downwards.
2. Fit the motor fan (14) on the shaft by hand.

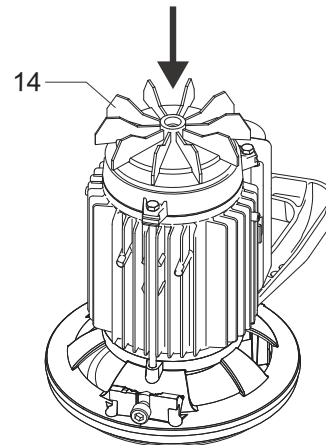


Fig. 25 Fitting the motor fan

TM07 3823 0519

TM07 3824 0519

TM07 3825 0519

TM07 3826 0519

TM07 3827 0519

TM07 3828 0519

6.5 Fitting the motor shell

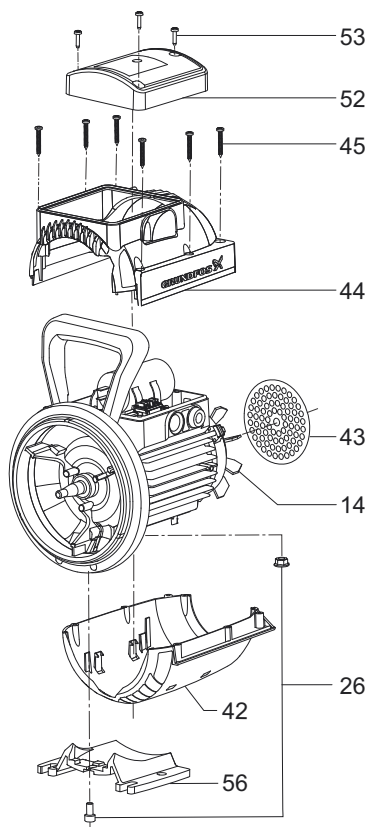


Fig. 26 Fitting the motor shell

1. Place the pump in a vertical position with the motor fan (14) facing upwards.

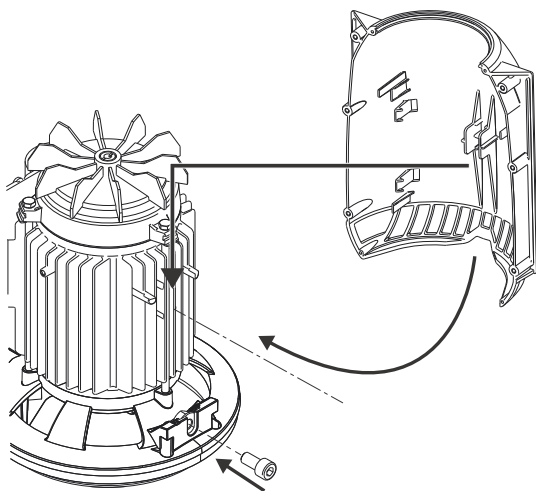


Fig. 27 Fitting the nut and the lower motor shell

2. Place the nut (26) in the groove on the motor flange.
3. Fit the lower motor shell (42). Align the guides on the inside of the lower motor shell (42) with the metal cooling ribs on the stator housing. Click the motor shell in place.
4. Mount the foot (56) and tighten the screw (26). Torque: 12 ± 1 Nm.
5. Fit the shell grid (43) in the groove in the motor shell (42).
6. Fit the upper motor shell (44).
7. Fasten the six screws (45) that hold the motor shells together. Torque: 1.5 ± 0.1 Nm.



Verification of assembly:

Turn the shaft by rotating the impeller (19) clockwise and check that the motor fan (14) does not touch the motor shell (42 and 44).

8. If the power cable is connected to the terminal box, fit the top lid on the terminal box and fasten the three screws. If not, follow the instructions below on how to connect the power cable.

6.6 Connecting the power cable in the terminal box

1. Locate the power-supply terminal and cable clamp inside the terminal box.

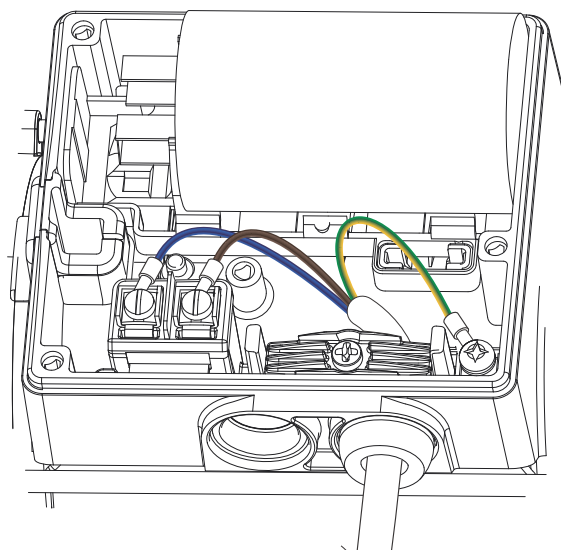


Fig. 28 Connecting the power cable to the terminal box

2. Loosen the cable clamp.
3. Push one end of the cable through the cable gland located on the side of the terminal box.
4. Connect the cable conductors to the power-supply terminal. See wiring diagram.

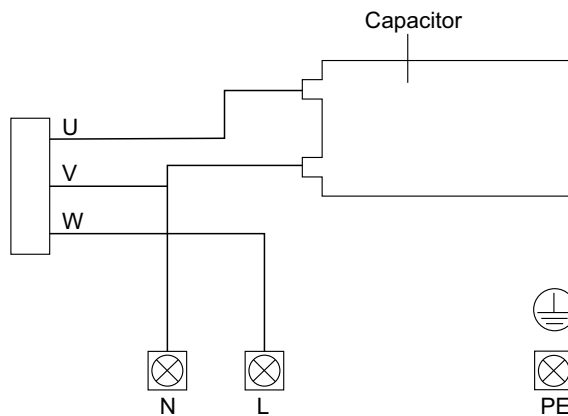


Fig. 29 Wiring diagram for the JP pump

5. Tighten the terminal screws. Torque: 2.2 ± 0.2 Nm.
6. Tighten the cable clamp screw. Torque: 1.5 ± 0.1 Nm. Make sure not to overtighten the cable clamp screw.
7. Fit the cover (52) onto the terminal box and fasten the three screws (53). Torque: 1.5 ± 0.1 Nm.

TM07 3814 0519

TM07 3829 0519

TM07 3836 0519

TM07 3837 0319

6.7 Fitting the hydraulic parts

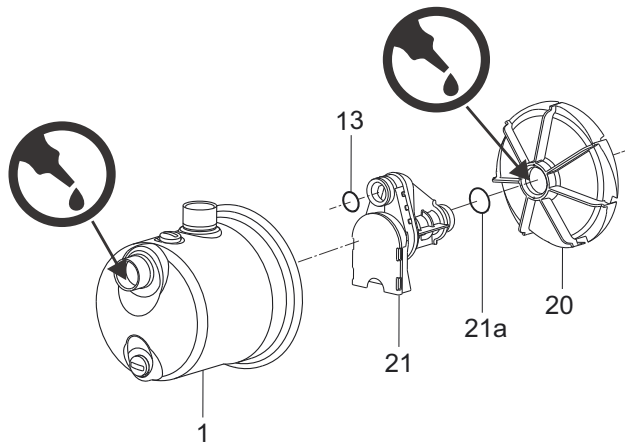


Fig. 30 Exploded view of hydraulic parts and pump housing

1. Lubricate the O-ring seat on the diffuser (20). See section 7.1 *Lubricant*.
2. Fit the two O-rings (13, 21a) on the venturi tube (21).
3. Assemble the venturi tube (21) and diffuser (20) by hand.
4. Lubricate the O-ring seat inside the inlet on the pump housing (1). See section 7.1 *Lubricant*.
5. Fit by hand the venturi tube (21) and diffuser (20) inside the pump housing (1).

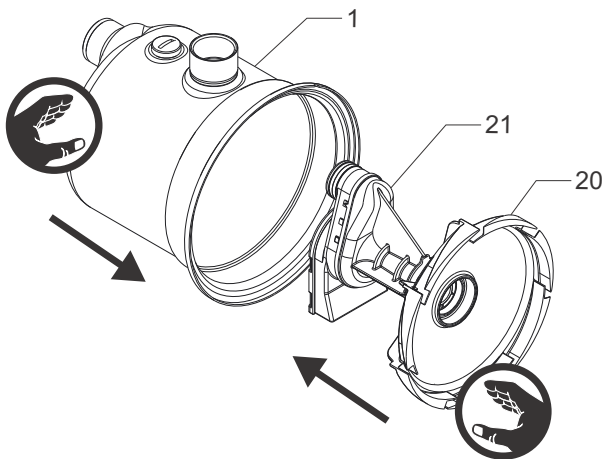


Fig. 31 Fitting the hydraulic parts in the pump housing

6.8 Fitting the pump housing

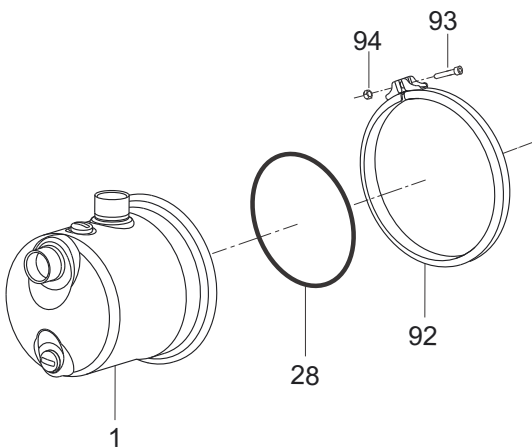


Fig. 32 Exploded view of the pump housing

1. Place the pump in a vertical position with the shell grid (43) facing downwards.
2. Fit the O-ring (28) on the seal disc (15). No lubrication is needed. Run a screw driver along the ring to remove any twisting.

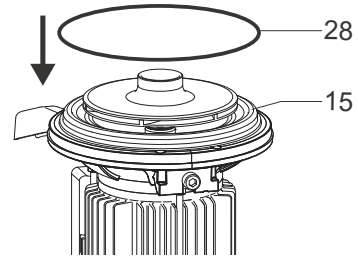


Fig. 33 Fitting the O-ring on the seal disc

3. Fit the pump housing (1) so that the cut-out on the edge of the pump housing is aligned with the marker on the edge of the motor flange.

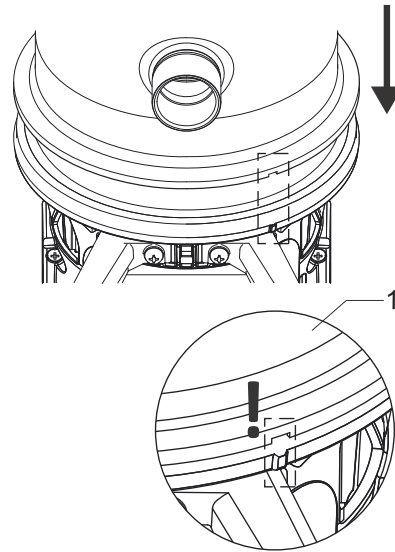


Fig. 34 Aligning the pump housing on the motor flange

4. Fit the clamp ring (92) on the recess. Use two flat screw drivers to widen the clamp.

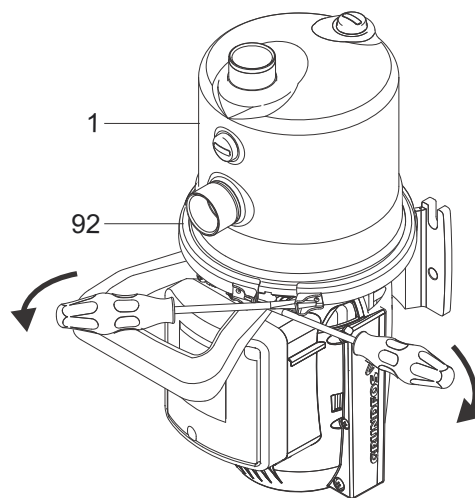


Fig. 35 Fitting the clamp ring

5. Place the screw (93) on one side and nut and washer (94) on the other side and tighten. Torque: 6.1 ± 0.1 Nm.

TM07 3831 0519

TM07 3835 0919

TM07 3832 0519

TM07 3833 0519

TM07 3808 0519

TM07 3809 0519

7. Additional information

7.1 Lubricant

We recommend using soapy water.

7.2 Torques

Pos.	Description	Torque [Nm]
26	Screw for mounting the foot (56)	12 ± 1
45	Six screws that hold the motor shells together (42 and 44)	1.5 ± 0.1
-	Screws for wiring in the terminal box	2.2 ± 0.2
-	Cable clamp screw in the terminal box	1.5 ± 0.1
53	Three screws for mounting the cover (52) onto the terminal box	1.5 ± 0.1
93	Screw for mounting the clamp ring (92)	6.1 ± 0.1
94	Nut for mounting the clamp ring (92)	6.1 ± 0.1

7.3 Nameplate

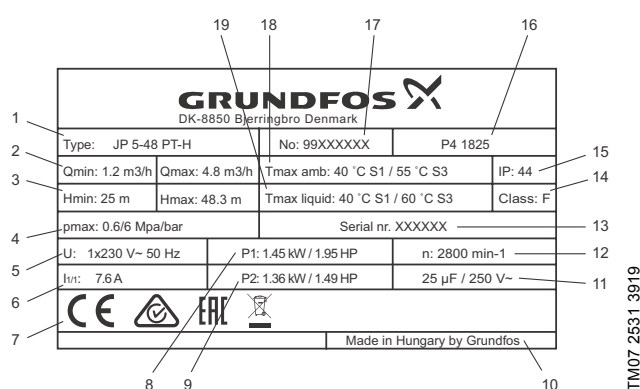


Fig. 36 Nameplate example for JP

Pos.	Description
1	Type
2	Min. flow rate and max. flow rate
3	Min. head and max. head
4	Max. pressure
5	Supply voltage and frequency
6	Full-load current
7	Approvals
8	Power consumption
9	Rated power
10	Country of origin
11	Capacitor data
12	Speed of rotation
13	Serial number
14	Insulation class
15	Enclosure class
16	Factory and production code, year and week
17	Product number
18	Max. ambient temperature
19	Max. liquid temperature

7.4 Type key

Example:

JP . 3- . 42 . PT- . V . 1x230 V . 50 Hz . 2m . SCHUKO . HU

Code	Description
JP	Jet Pump
3-	Max. flow rate [m ³ /h]
42	Max. head [m]
PT-	Booster type, if applicable: <ul style="list-style-type: none"> • PT: Pressure Tank • PM: Pressure Manager • PS: Pressure Switch
V	Tank type, if applicable: <ul style="list-style-type: none"> • V: Vertical • H: Horizontal
1x230 V	Voltage [V]
50 Hz	Frequency [Hz]
2m	Cable length [m]
SCHUKO	Plug type
HU	Country of origin

7.5 Fault finding the product

Fault finding procedures are described in the installation and operating instructions. Use the QR code or link below:



<http://net.grundfos.com/qr/i/99520338>

7.6 Exploded view

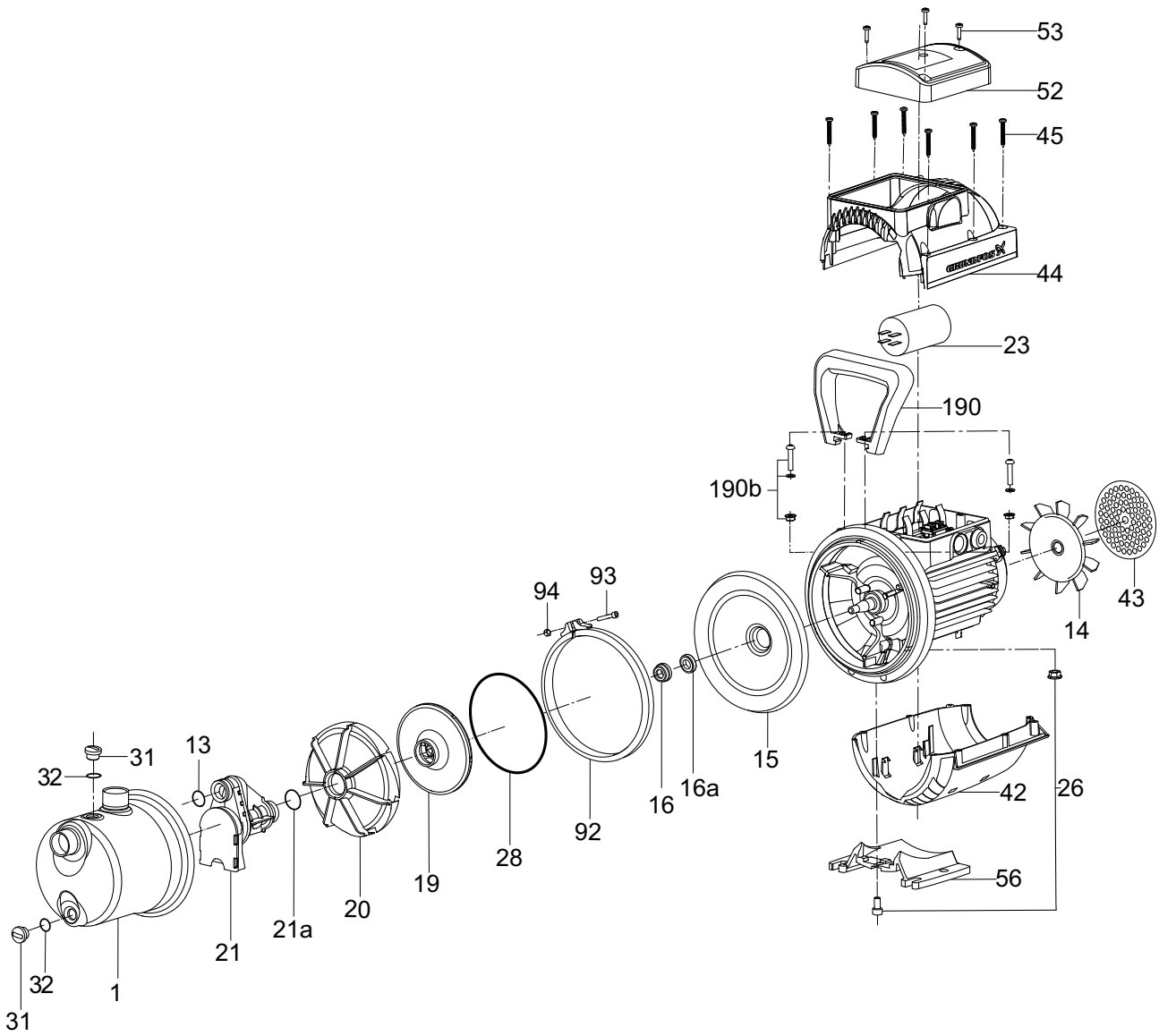


Fig. 37 Exploded view of JP pump

Pos.	Description
1	Pump housing
13	O-ring
14	Motor fan
15	Seal disc
16	Shaft seal, rotary part
16a	Shaft seal, stationary part
19	Impeller
20	Diffuser
21	Venturi tube
21a	O-ring
23	Capacitor
26	Screw and nut
28	O-ring
31	Plug

Pos.	Description
32	O-ring
42	Lower motor shell
43	Shell grid
44	Upper motor shell
45	Screws
52	Terminal box cover
53	Screws
56	Foot
92	Clamp ring
93	Screw
94	Nut
190	Handle
190b	Screw, washer and nut

Argentina

Bombas GRUNDFOS de Argentina S.A.
Ruta Panamericana km. 37.500 Centro
Industrial Garin
1619 Garin Pcia. de B.A.
Phone: +54-3327 414 444
Telefax: +54-3327 45 3190

Australia

GRUNDFOS Pumps Pty. Ltd.
P.O. Box 2040
Regency Park
South Australia 5942
Phone: +61-8-8461-4611
Telefax: +61-8-8340 0155

Austria

GRUNDFOS Pumpen Vertrieb Ges.m.b.H.
Grundfosstraße 2
A-5082 Grödig/Salzburg
Tel.: +43-6246-883-0
Telefax: +43-6246-883-30

Belgium

N.V. GRUNDFOS Bellux S.A.
Boomssesteenweg 81-83
B-2630 Aartselaar
Tél.: +32-3-870 7300
Télécopie: +32-3-870 7301

Belarus

Представительство ГРУНДФОС в
Минске
220125, Минск
ул. Шафарнянская, 11, оф. 56, БЦ
«Порт»
Тел.: +7 (375 17) 286 39 72/73
Факс: +7 (375 17) 286 39 71
E-mail: minsk@grundfos.com

Bosnia and Herzegovina

GRUNDFOS Sarajevo
Zmaja od Bosne 7-7A,
BH-71000 Sarajevo
Phone: +387 33 592 480
Telefax: +387 33 590 465
www.ba.grundfos.com
e-mail: grundfos@bih.net.ba

Brazil

BOMBAS GRUNDFOS DO BRASIL
Av. Humberto de Alencar Castelo Branco,
630
CEP 09850 - 300
São Bernardo do Campo - SP
Phone: +55-11 4393 5533
Telefax: +55-11 4343 5015

Bulgaria

Grundfos Bulgaria EOOD
Slatina District
Iztocna Tangenta street no. 100
BG - 1592 Sofia
Tel. +359 2 49 22 200
Fax. +359 2 49 22 201
email: bulgaria@grundfos.bg

Canada

GRUNDFOS Canada Inc.
2941 Brighton Road
Oakville, Ontario
L6H 6C9
Phone: +1-905 829 9533
Telefax: +1-905 829 9512

China

GRUNDFOS Pumps (Shanghai) Co. Ltd.
10F The Hub, No. 33 Suhong Road
Minhang District
Shanghai 201106
PRC
Phone: +86 21 612 252 22
Telefax: +86 21 612 253 33

COLOMBIA

GRUNDFOS Colombia S.A.S.
Km 1.5 vía Siberia-Cota Conj. Potrero
Chico,
Parque Empresarial Arcos de Cota Bod.
1A,
Cota, Cundinamarca
Phone: +57(1)-2913444
Telefax: +57(1)-8764586

Croatia

GRUNDFOS CROATIA d.o.o.
Buzinski prilaz 38, Buzin
HR-10010 Zagreb
Phone: +385 1 6595 400
Telefax: +385 1 6595 499
www.hr.grundfos.com

GRUNDFOS Sales Czechia and Slovakia s.r.o.

Čajkovského 21
779 00 Olomouc
Phone: +420-585-716 111

Denmark

GRUNDFOS DK A/S
Martin Bachs Vej 3
DK-8850 Bjerringbro
Tlf.: +45-87 50 50 50
Telefax: +45-87 50 51 51
E-mail: info_GDK@grundfos.com
www.grundfos.com/DK

Estonia

GRUNDFOS Pumps Eesti OÜ
Peterburi tee 92G
11415 Tallinn
Tel: + 372 606 1690
Fax: + 372 606 1691

Finland

OY GRUNDFOS Pumpat AB
Trukkikuja 1
FI-01360 Vantaa
Phone: +358-(0) 207 889 500

France

Pompes GRUNDFOS Distribution S.A.
Parc d'Activités de Chesnes
57, rue de Malacombe
F-38290 St. Quentin Fallavier (Lyon)
Tél.: +33-4 74 82 15 15
Télécopie: +33-4 74 94 10 51

Germany

GRUNDFOS GMBH
Schlüterstr. 33
40699 Erkrath
Tel.: +49-(0) 211 929 69-0
Telefax: +49-(0) 211 929 69-3799
e-mail: infoservice@grundfos.de
Service in Deutschland:
e-mail: kundendienst@grundfos.de

Greece

GRUNDFOS Hellas A.E.B.E.
20th km. Athinon-Markopoulou Av.
P.O. Box 71
GR-19002 Peania
Phone: +0030-210-66 83 400
Telefax: +0030-210-66 46 273

Hong Kong

GRUNDFOS Pumps (Hong Kong) Ltd.
Unit 1, Ground floor
Siu Wai Industrial Centre
29-33 Wing Hong Street &
68 King Lam Street, Cheung Sha Wan
Kowloon
Phone: +852-27861706 / 27861741
Telefax: +852-27858664

Hungary

GRUNDFOS Hungária Kft.
Tópark u. 8
H-2045 Törökbálint,
Phone: +36-23 511 110
Telefax: +36-23 511 111

India

GRUNDFOS Pumps India Private Limited
118 Old Mahabalipuram Road
Thoraiakkam
Chennai 600 096
Phone: +91-44 2496 6800

Indonesia

PT. GRUNDFOS POMPA
Graha Intirub Lt. 2 & 3
Jln. Cililitan Besar No.454. Makasar,
Jakarta Timur
ID-Jakarta 13650
Phone: +62 21-469-51900
Telefax: +62 21-460 6910 / 460 6901

Ireland

GRUNDFOS (Ireland) Ltd.
Unit A, Merrywell Business Park
Ballymount Road Lower
Dublin 12
Phone: +353-1-4089 800
Telefax: +353-1-4089 830

Italy

GRUNDFOS Pompe Italia S.r.l.
Via Gran Sasso 4
I-20060 Truccazzano (Milano)
Tel.: +39-02-95838112
Telefax: +39-02-95309290 / 95838461

Japan

GRUNDFOS Pumps K.K.
1-2-3, Shin-Miyakoda, Kita-ku,
Hamamatsu
431-2103 Japan
Phone: +81 53 428 4760
Telefax: +81 53 428 5005

Korea

GRUNDFOS Pumps Korea Ltd.
6th Floor, Aju Building 679-5
Yeoksam-dong, Kangnam-ku, 135-916
Seoul, Korea
Phone: +82-2-5317 600
Telefax: +82-2-5633 725

Latvia

SIA GRUNDFOS Pumps Latvia
Deglava biznesa centrs
Augusta Deglava ielā 60, LV-1035, Rīga,
Tālrunis: + 371 714 9640, 7 149 641
Fakss: + 371 914 9646

Lithuania

GRUNDFOS Pumps UAB
Smolensko g. 6
LT-03201 Vilnius
Tel: + 370 52 395 430
Fax: + 370 52 395 431

Malaysia

GRUNDFOS Pumps Sdn. Bhd.
7 Jalan Peguam U1/25
Glenmarie Industrial Park
40150 Shah Alam
Selangor
Phone: +60-3-5569 2922
Telefax: +60-3-5569 2866

Mexico

Bombas GRUNDFOS de México S.A. de
C.V.
Boulevard TLC No. 15
Parque Industrial Stiva Aeropuerto
Apodaca, N.L. 66600
Phone: +52-81-8144 4000
Telefax: +52-81-8144 4010

Netherlands

GRUNDFOS Netherlands
Veluwezoom 35
1326 AE Almere
Postbus 22015
1302 CA ALMERE
Tel.: +31-88-478 6336
Telefax: +31-88-478 6332
E-mail: info_gnl@grundfos.com

New Zealand

GRUNDFOS Pumps NZ Ltd.
17 Beatrice Tinsley Crescent
North Harbour Industrial Estate
Albany, Auckland
Phone: +64-9-415 3240
Telefax: +64-9-415 3250

Norway

GRUNDFOS Pumper A/S
Strømsveien 344
Postboks 235, Leirdal
N-1011 Oslo
Tlf.: +47-22 90 47 00
Telefax: +47-22 32 21 50

Poland

GRUNDFOS Pompy Sp. z o.o.
ul. Klonowa 23
Baranowo k. Poznania
PL-62-081 Przeźmierowo
Tel: (+48-61) 650 13 00
Fax: (+48-61) 650 13 50

Portugal

Bombas GRUNDFOS Portugal, S.A.
Rua Calvet de Magalhães, 241
Apartado 1079
P-2770-153 Paço de Arcos
Tel.: +351-21-440 76 00
Telefax: +351-21-440 76 90

Romania

GRUNDFOS Pompe România SRL
Bd. Biruintei, nr 103
Pantelimon county Ilfov
Phone: +40 21 200 4100
Telefax: +40 21 200 4101
E-mail: romanian@grundfos.ro

Russia

ООО ГРУНДФОС Россия
ул. Школьная, 39-41
Москва, RU-109544, Russia
Тел. (+7) 495 564-88-00 (495) 737-30-00
Факс (+7) 495 564 8811
E-mail grundfos.moscow@grundfos.com

Serbia

Grundfos Srbija d.o.o.
Omladinskih brigada 90b
11070 Novi Beograd
Phone: +381 11 2258 740
Telefax: +381 11 2281 769
www.rs.grundfos.com

Singapore

GRUNDFOS (Singapore) Pte. Ltd.
25 Jalan Tukang
Singapore 619264
Phone: +65-6681 9688
Telefax: +65-6681 9689

Slovakia

GRUNDFOS s.r.o.
Prievozská 4D
821 09 BRATISLAVA
Phone: +421 2 5020 1426
sk.grundfos.com

Slovenia

GRUNDFOS LJUBLJANA, d.o.o.
Leskoškova 9e, 1122 Ljubljana
Phone: +386 (0) 1 568 06 10
Telefax: +386 (0) 1 568 06 19
E-mail: tehnika-si@grundfos.com

South Africa

Grundfos (PTY) Ltd.
16 Lascelles Drive, Meadowbrook Estate
1609 Germiston, Johannesburg
Tel.: (+27) 10 248 6000
Fax: (+27) 10 248 6002
E-mail: lgradidge@grundfos.com

Spain

Bombas GRUNDFOS España S.A.
Camino de la Fuentesilla, s/n
E-28110 Algete (Madrid)
Tel.: +34-91-848 8800
Telefax: +34-91-628 0465

Sweden

GRUNDFOS AB
Box 333 (Lunnagårdsgatan 6)
431 24 Mölndal
Tel.: +46 31 332 23 000
Telefax: +46 31 331 94 60

Switzerland

GRUNDFOS Pumpen AG
Bruggacherstrasse 10
CH-8117 Fällanden/ZH
Tel.: +41-44-806 8111
Telefax: +41-44-806 8115

Taiwan

GRUNDFOS Pumps (Taiwan) Ltd.
7 Floor, 219 Min-Chuan Road
Taichung, Taiwan, R.O.C.
Phone: +886-4-2305 0868
Telefax: +886-4-2305 0878

Thailand

GRUNDFOS (Thailand) Ltd.
92 Chaloe Phrakiat Rama 9 Road,
Dokmai, Pravej, Bangkok 10250
Phone: +66-2-725 8999
Telefax: +66-2-725 8998

Turkey

GRUNDFOS POMPA San. ve Tic. Ltd. Sti.
Gebze Organize Sanayi Bölgesi
İhsan dede Caddesi,
2. yol 200. Sokak No. 204
41490 Gebze/ Kocaeli
Phone: +90 - 262-679 7979
Telefax: +90 - 262-679 7905
E-mail: satis@grundfos.com

Ukraine

Бізнес Центр Європа
Столицьне шосе, 103
м. Київ, 03131, Україна
Телефон: (+38 044) 237 04 00
Факс: (+38 044) 237 04 01
E-mail: ukraine@grundfos.com

United Arab Emirates

GRUNDFOS Gulf Distribution
P.O. Box 16768
Jebel Ali Free Zone
Dubai
Phone: +971 4 8815 166
Telefax: +971 4 8815 136

United Kingdom

GRUNDFOS Pumps Ltd.
Grovebury Road
Leighton Buzzard/Beds. LU7 4TL
Phone: +44-1525-850000
Telefax: +44-1525-850011

U.S.A.

GRUNDFOS Pumps Corporation
9300 Loiret Blvd.
Lenexa, Kansas 66219
Phone: +1-913-227-3400
Telefax: +1-913-227-3500

Uzbekistan

Grundfos Tashkent, Uzbekistan The Representative Office of Grundfos Kazakhstan in Uzbekistan
38a, Oybek street, Tashkent
Телефон: (+998) 71 150 3290 / 71 150 3291
Факс: (+998) 71 150 3292

Addresses Revised 15.01.2019

99592855 0319

ECM: 1255365

Trademarks displayed in this material, including but not limited to Grundfos, the Grundfos logo and "be think innovate" are registered trademarks owned by The Grundfos Group. All rights reserved. © 2019 Grundfos Holding A/S, all rights reserved.